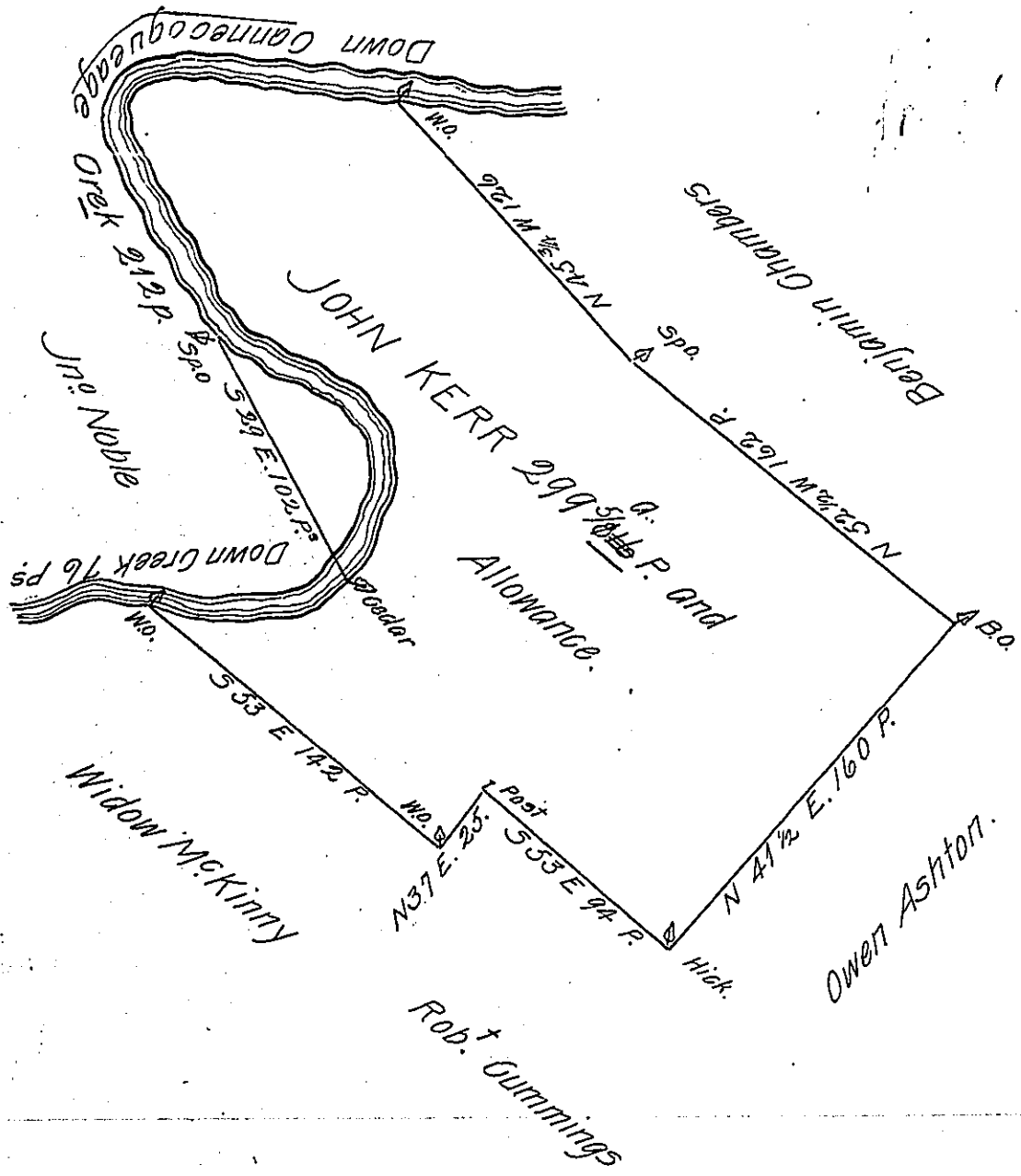


C-234-49

B-23-74



A Draft of a Tract of Land situate in Guilford Township in the County of Franklin (late Cumberland) containing two Hundred and ninety nine Acres and 116 Perches and an Allowance of Six P. Cent. for Roads &c.^o Resurvey'd October 27th 1785 in pursuance of the late Proprietaries Warrant granted to John Kerr bearing Date the 4th Day of August 1766.

To John Lukens Esq^r }
 Surveyor General }
 W^t No 201 letter G.

Matt W Henderson D.S.

IN TESTIMONY that the above is a copy of the original remaining on file in the Department of Internal Affairs of Pennsylvania, made conformably to an Act of Assembly approved the 16th day of February, 1833, I have hereunto set my Hand and caused the Seal of said Department to be affixed at Harrisburg, this eleventh day of May 1905.

Loac R. Pearson
 Secretary of Internal Affairs.